



Planning



Positional elements



<https://devonjuniorchess.co.uk/content/positional-elements>

activity	co-ordination	King's-side attack	pawn break	potential
back rank	development	Knight outpost	pawn breakthrough	prophylaxis
bad Bishop	diagonal	long diagonal	pawn chain	Queen's-side attack
battery	exchanges	majority	pawn island	rank
bind	file	material	pawn lever see pawn break	rook lift
Bishop pair (two Bishops)	Greek diagonal	minority attack	pawn storm	rook: doubled
blockade	half-open file	mobility	pawn structure	sacrifice
centre	holes	offside piece	pawn wedge	seventh rank
classic (Italian) diagonal	initiative	open file	pawn: backward	space
colour complex	King safety	overprotection	pawn: candidate	tempo
			pawn: doubled	the Exchange
			pawn: isolated	weakness
			pawn: isolated Queen's (IQP)	Zugzwang
			pawn: passed	
			pawns: hanging	

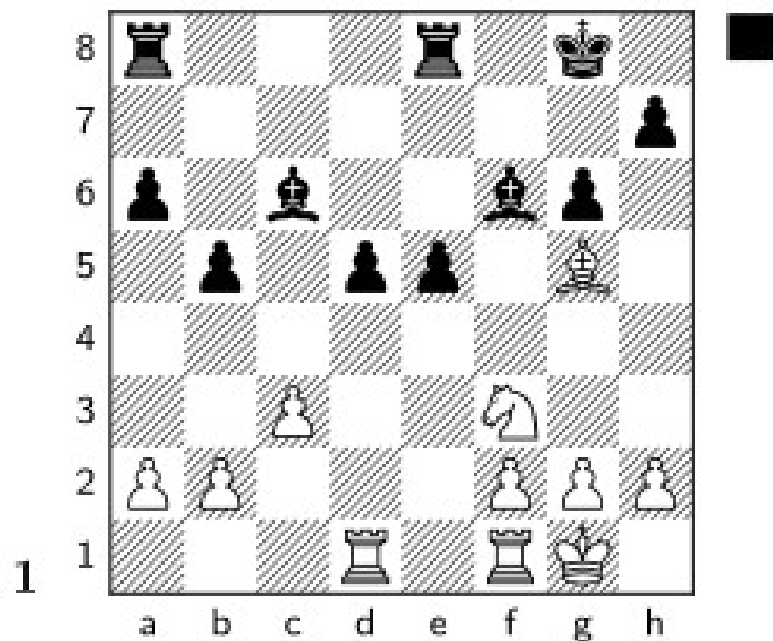
Evaluate like a GM



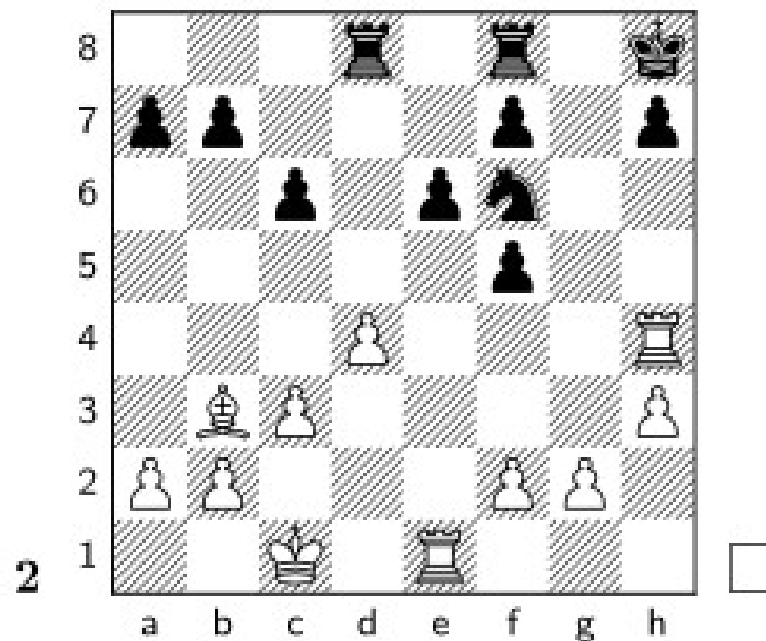
1 Evaluation

Evaluate the position and suggest a move for the side to play.

Hoy - Perelshteyn
2016



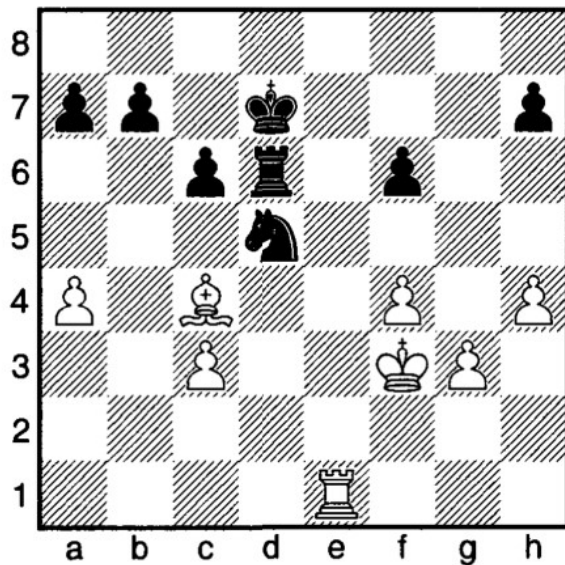
Perelshteyn - Elbilia
1997



Chess Exam



Question #22

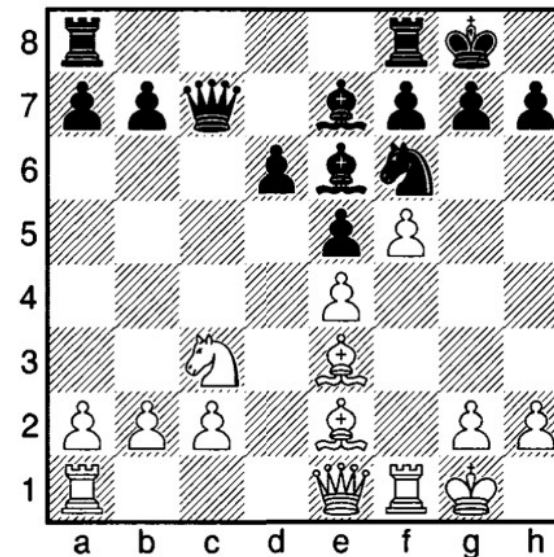


White to Move!

22 - I Evaluate the position

A	Black is Winning
B	Black is Better
C	Nearly Equal
D	White is Better

Question #23



Black to Move!

23 - I Evaluate the position

A	White is Winning
B	White is Better
C	Nearly Equal
D	Black is Better

EXERCISE: planning



- You have a position from an U14 chess game

READY

- What's going on?

- Listen to the pieces

AIM

- Come up with a plan

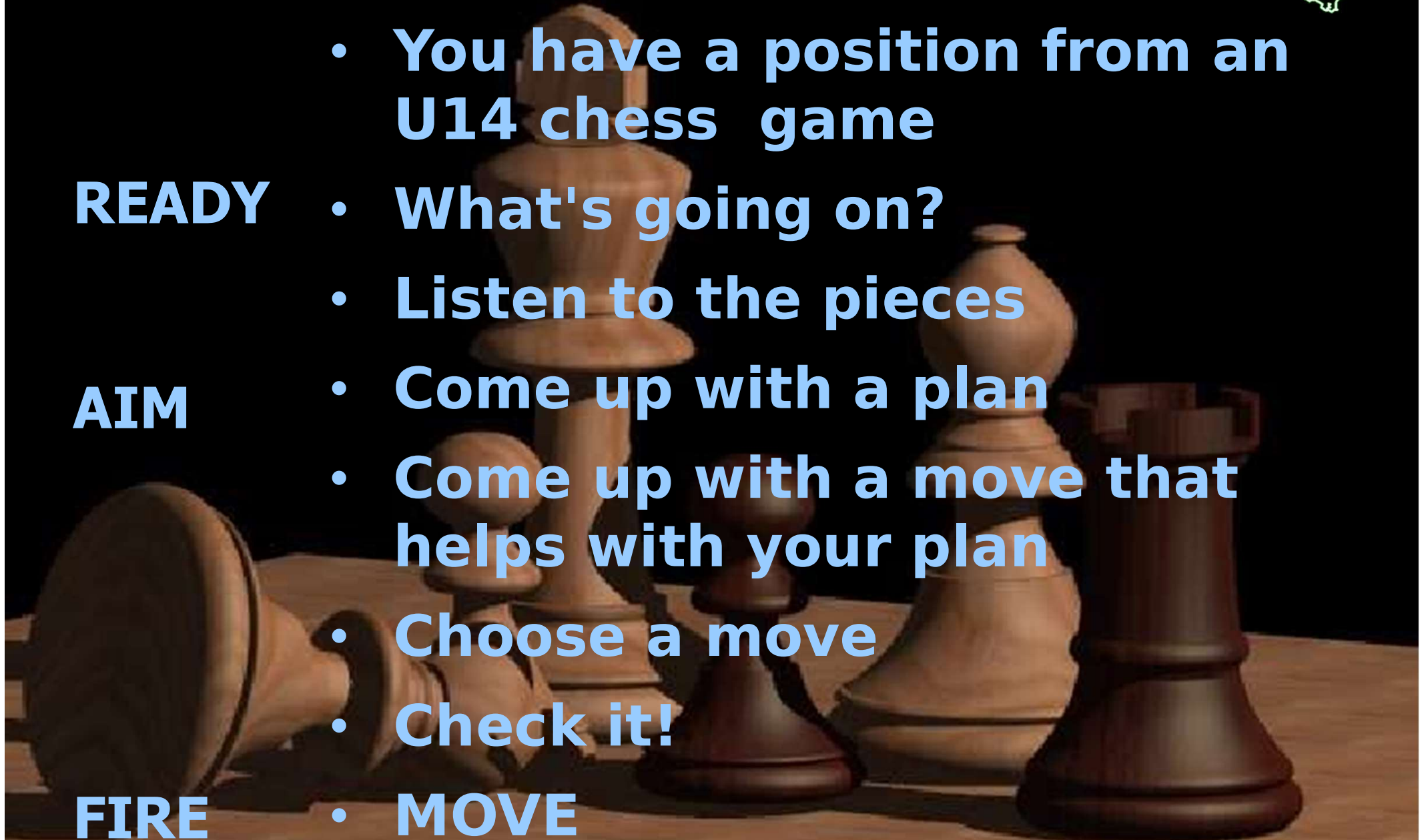
- Come up with a move that helps with your plan

- Choose a move

- Check it!

FIRE

- MOVE



U14 game



EXERCISE: U18



- You have a position from a master chess game
- What's going on?
- Assess position - key features (KWPFLC) & evaluation
- Come up with plans that fit your assessment
- Come up with moves that help with your plans
- Choose a plan and a move
- Check it!

Botvinnik-Kan 1939



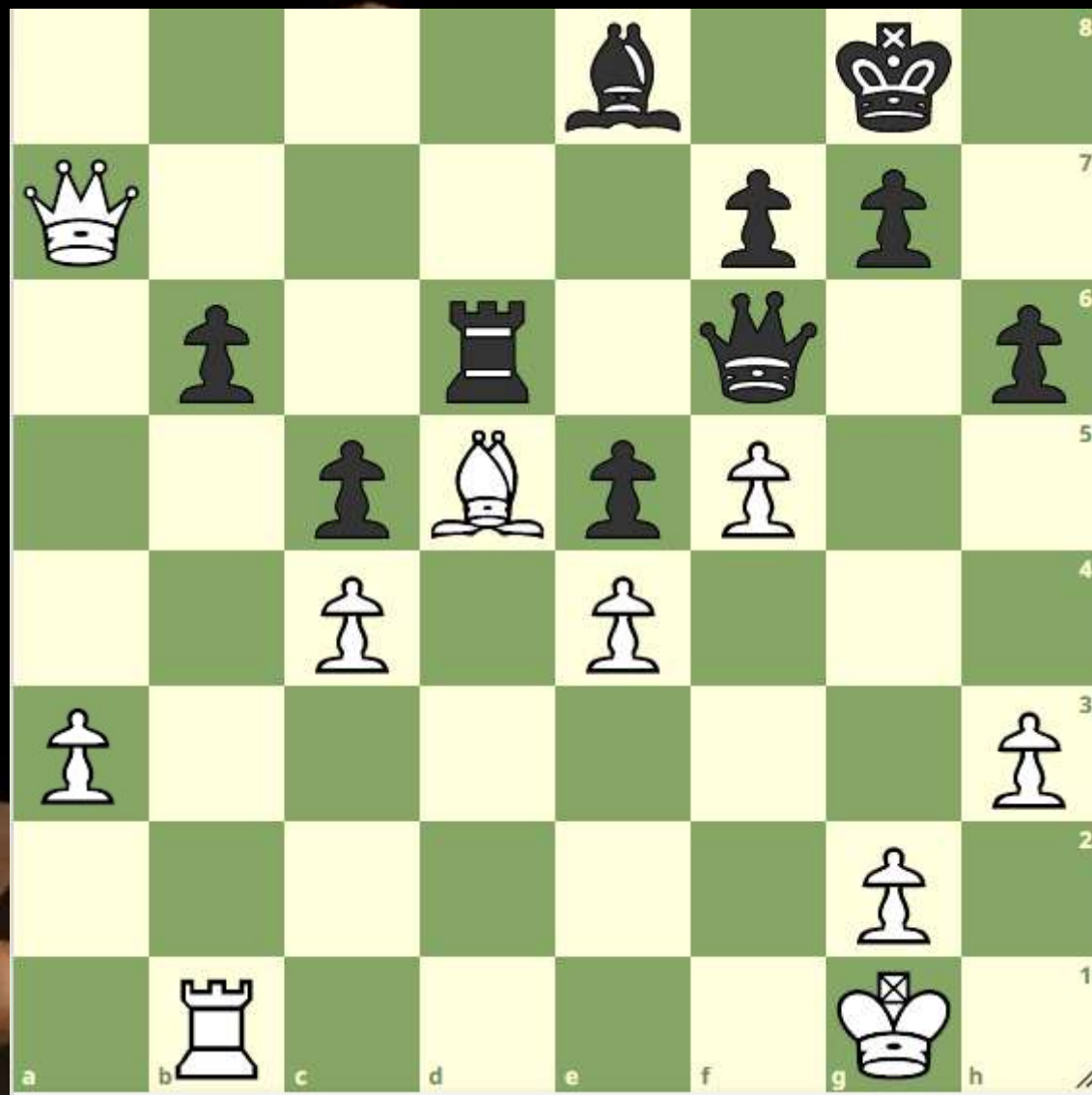
'Silman Thinking Technique'



BK - A1 - 'Fantasy Position'



BK - A2

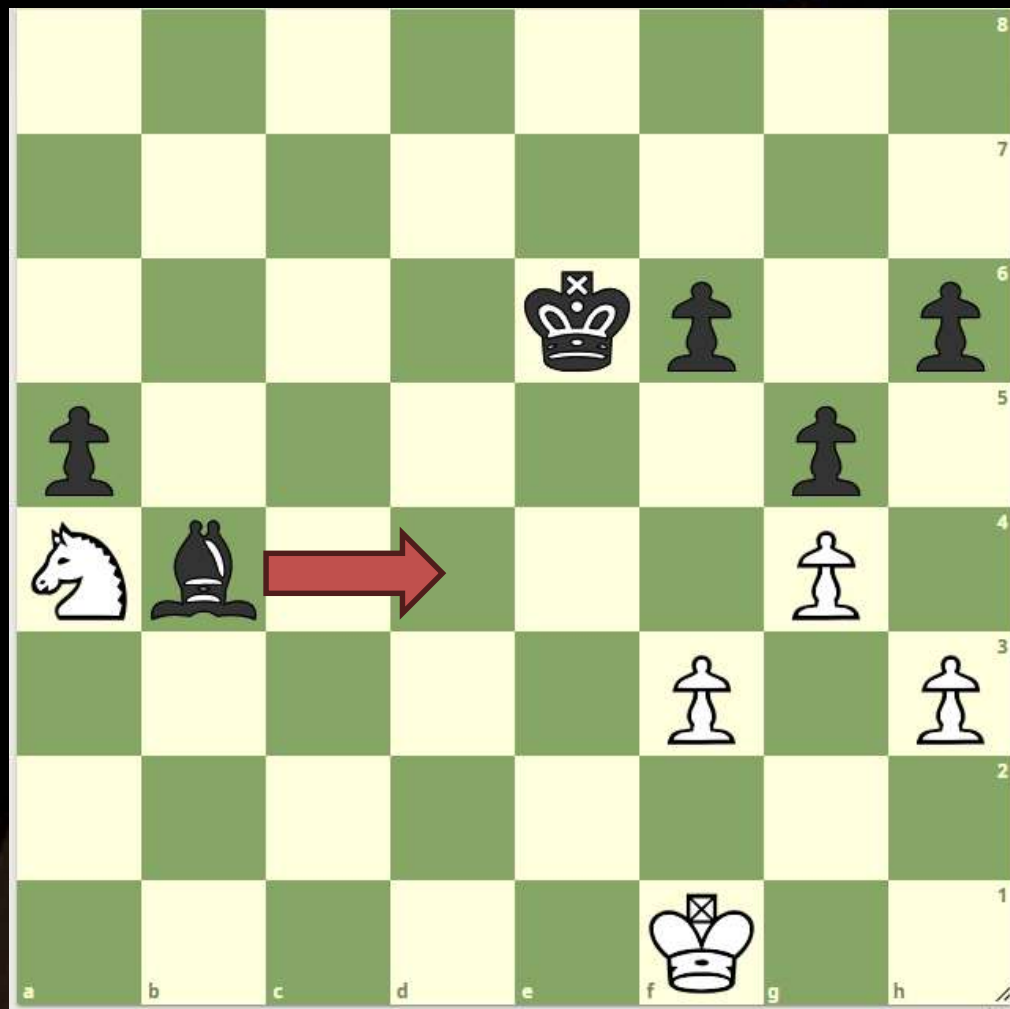


BK - A3



Advanced planning

Schematic thinking 1



"Recently, I was analysing an endgame with Steve Webb and at one point just pushed a bishop from b4 to d4, obliterating the chances of the Knight at a4 which can now only move to leave a lost K+P ending. Steve was briefly outraged, as I recall, so what made me do that? Well, you have to have seen the pattern before, but obviously ...Bb4-d4 is not a legal move. The point is that thinking in this way stops you getting bogged down in move orders, and focuses your attention on what must be done soon."

Schematic thinking 2



"Once in a lobby of the Hall of Columns of the Trade Union Centre in Moscow a group of masters were analysing an ending. They could not find the right way to go about things and there was a lot of arguing about it. Suddenly Capablanca came into the room. He was always fond of walking about when it was his opponent's turn to move. Learning the reason for the dispute the Cuban bent down to the position, said 'Si, si,' and suddenly redistributed the pieces all over the board to show what the correct formation was for the side trying to win. I haven't exaggerated. Don Jose literally pushed the

Schematic thinking 3



*"White's plan is to prevent the advance of the enemy c-pawn which might make his own pawn at b2 weak, and to control the whole board as far as the fifth rank. This is achieved by playing the King to e3, the Rook to c3, the Knight to d4 and the pawns to b4 and f4. When this has been achieved White will advance his Q-side pawns" – CAPABLANCA, Moscow 1936 Tournament Bulletin, quoted by KOTOV in *Play like a Grandmaster*, tr. Cafferty, pub. 1978 Batsford. ("Note - no variations!" KOTOV)*



EXERCISES



Ljublinsky-Botvinnik



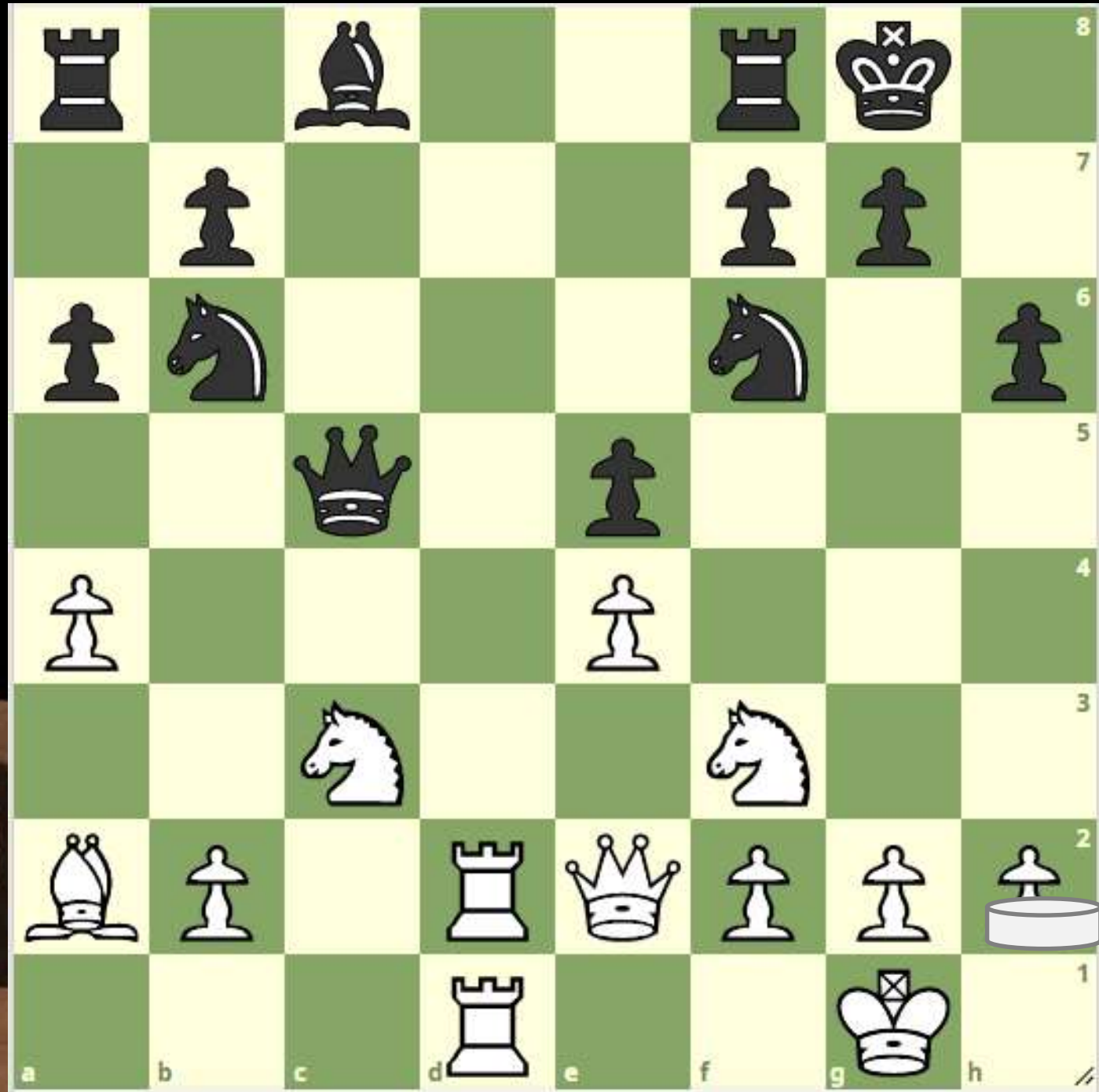
1...Rd4!



Botvinnik-Sorokin 1931



1.Qe3!?



Botvinnik-Sorokin 1931



1.Qe3!?



20 Q-K3!



This far from obvious move is the strongest in the given position. With the exchange of Queens, which he cannot avoid, the defects of Black's position grow more perceptible. In view of the backwardness of his development Black now certainly cannot oppose anything to the pressure along the Q file. His KP becomes very weak. To defend it Black finds himself forced to exchange a Bishop for the Knight at B3, after which not only his Q side but square KB2 is weakened.

The doubling of white pawns on the K file is of no essential importance.

8

7

6

5

4

3

2

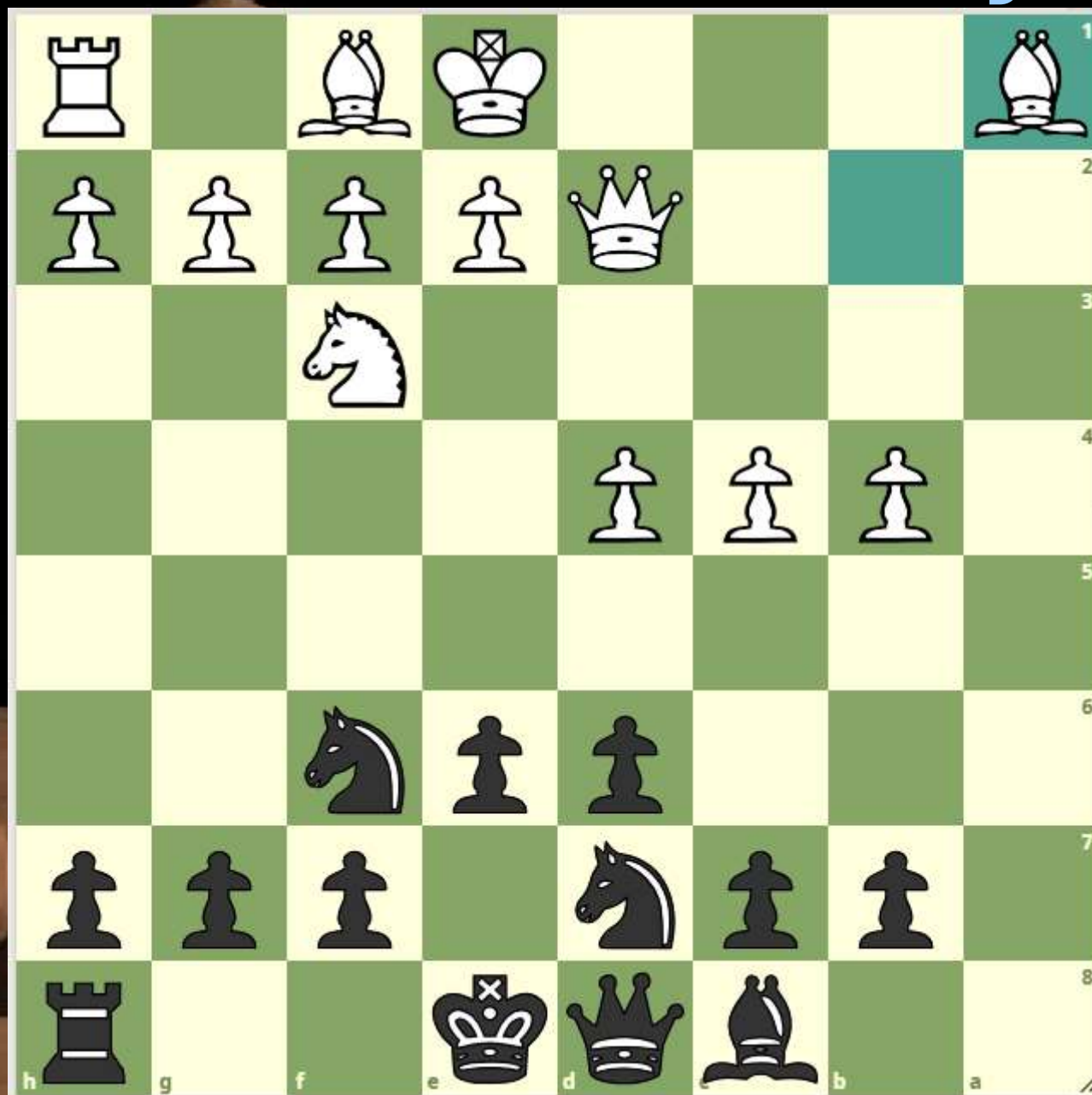
1



Schliperman-Yermolinksy



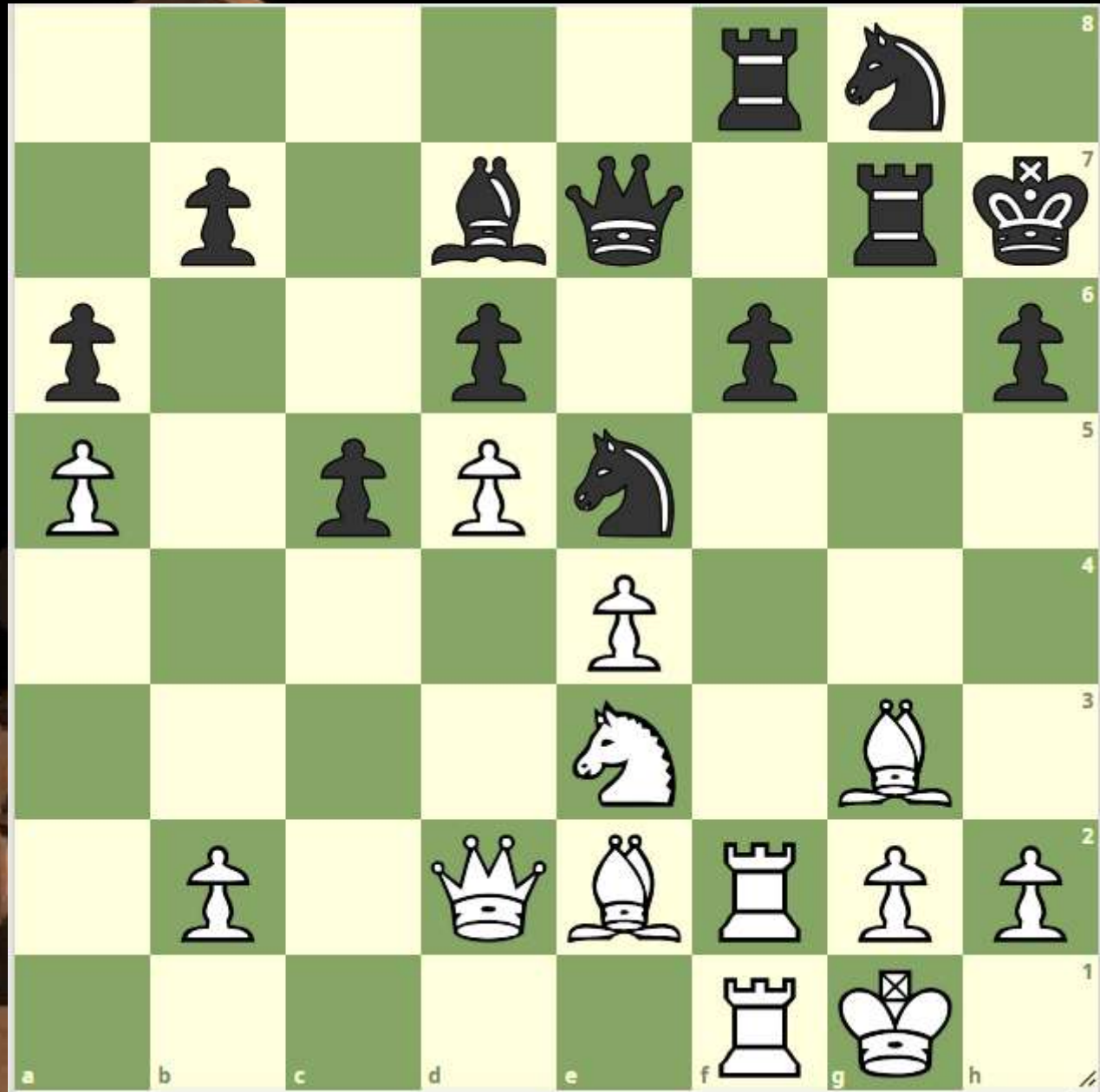
1...b5!



NN-NN?



1. Bxe5!



Karpov-Kasparov (1985#4)



1.Nxe6!



Fischer-Larsen



- **Black to move**
- **After 12...Bxb3, how do you recapture?**

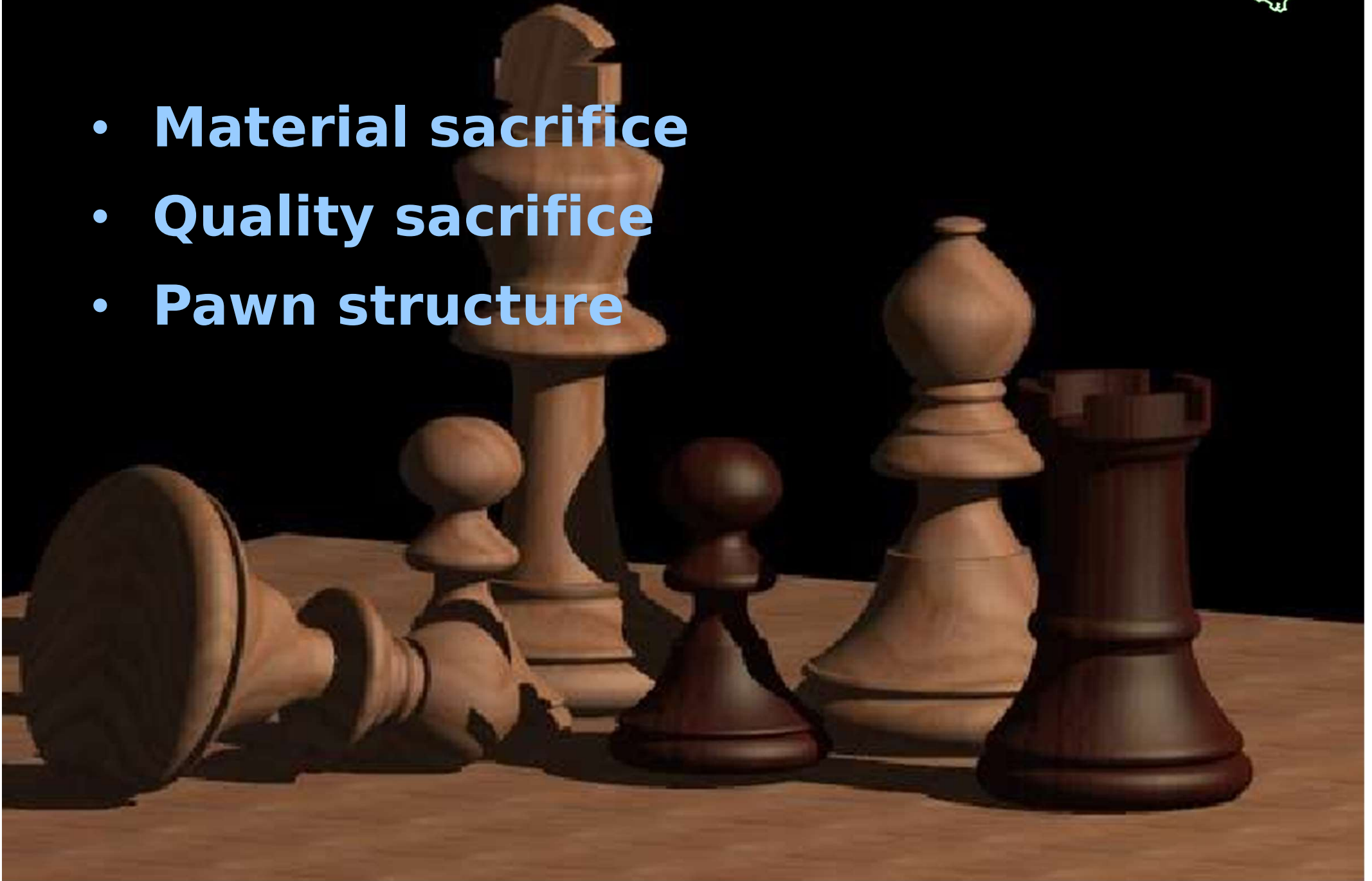
1.cxb3!





Paradox

- **Material sacrifice**
- **Quality sacrifice**
- **Pawn structure**





NEXT STEPS: strategy

- **DUNNINGTON** Can you be a positional chess genius?
- **BRICARD** Positional Chess Exercises
- **WATSON** Secrets of Modern Chess Strategy
- **AAGAARD** Positional play
- **SILMAN** Positional chess courses
on [chess.com](https://www.chess.com)